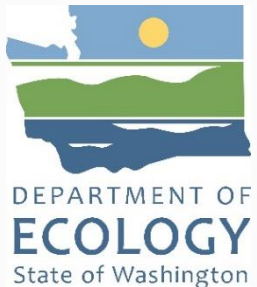




Ecology's Sand & Gravel General Permit



Eric Daiber, LG
Department of Ecology
Water Quality Program
Washington Aggregate & Concrete Association Winter Workshop
1/29/2025

Overview

1

Ecology Contacts

2

Importance of Sand & Gravel General Permit

3

Important Documents to Ecology Inspectors

4

Ecology Inspection Visits

5

Reports and Records

6

Enforcement Terminology

Contact Information for the Sand & Gravel General Permit

If you need to stop by the regional office:	If your Facility is in one of these Counties:	If you need assistance with permit requirements, or have site-specific questions please contact:	If you need help finding or completing applications, or other forms, or drafting public notices please contact:
Central Region Office 1250 West Alder Street Union Gap, WA 98903-0009	Benton, Chelan, Douglas, Kittitas, Klickitat, Okanogan, and Yakima	Alex Barnes alex.barnes@ecy.wa.gov	Joy Espinoza crowqpermits@ecy.wa.gov
Eastern Region Office 4601 North Monroe Street, Suite 202 Spokane WA 99205-1295	Adams, Asotin, Columbia, Ferry, Franklin, Garfield, Grant, Lincoln, Pend Oreille, Spokane, Stevens, Walla Walla, and Whitman	David Ennis David.Ennis@ecy.wa.gov	TBH
Northwest Region Office PO Box 330316 Shoreline, WA 98133-9716	Island, King, Kitsap, and Snohomish	Jay Fennell jay.fennell@ecy.wa.gov	Tricia Miller tricia.miller@ecy.wa.gov
	San Juan and Skagit	Sylvia Graham sylvia.graham@ecy.wa.gov	
	Whatcom	Jen Baptist jen.baptist@ecy.wa.gov	
Southwest Region Office P.O. Box 47775 Olympia WA 98504-7775	Clark, Cowlitz, Lewis, Pacific, Skamania, Thurston, and Wahkiakum	Dincer Kayhan dincer.kayhan@ecy.wa.gov	Jen Smith (TBD) jen.smith@ecy.wa.gov
	Clallam, Grays Harbor, Jefferson, Mason, and Pierce	Eli Newby eli.newby@ecy.wa.gov	

The screenshot shows a web browser window with the URL ecology.wa.gov/regulations-permits/permits-certifications/sand-gravel-general-permit. The page features the Washington Department of Ecology logo and a navigation menu with links to Home, Air & Climate, Water & Shorelines, Waste & Toxics, and Spills & Cleanup. A secondary menu includes Regulations & Permits, Research & Data, Blog, and Contact Us. The breadcrumb trail reads: Regulations & Permits > Permits & certifications > Sand & Gravel General Permit. On the left, a sidebar lists 'Permits & certifications' with 'Sand & Gravel General Permit' selected. The main content area is titled 'Sand & Gravel General Permit' and contains the following text: 'The Sand and Gravel General Permit regulates discharges of process water, stormwater, and water from mine dewatering into waters of the state associated with sand and gravel operations, rock quarries, and similar mining operations. The permit also covers concrete batch operations and hot-mix asphalt operations. Untreated water that discharges from sand and gravel operations may harm fish, aquatic life, and water quality. The current permit went into effect April 1, 2021, and expires on March 31, 2026. Join our [Sand and Gravel email list](#) to receive notifications about this permit.' Below this text is a green-bordered box titled 'I want to...' containing three links: 'Apply for a permit', 'Find out if I need a permit', and 'Learn about the concrete effluent study'.

Importance of Sand & Gravel General Permit?

- National Pollutant Discharge Elimination System (NPDES) and State Waste Discharge permit.
- **Required** to discharge pollutants to waters of the state -- using public resources for wastewater disposal (Chapter 90.48 RCW).
- Conditionally authorizes the discharge of pollutants to waters of the state with the goal of zero pollutants.

Discharges to Surface Water

- Natural or Artificial water found on the surface
 - Rivers, lakes, bays, and estuaries),
 - **Wetlands**
 - **Tributaries** that flow to water
 - Impoundments - like **reservoirs**



Discharges to Groundwater

- Groundwater means water in a saturated zone or stratum beneath the land surface or a surface water body.
- Discharge to ground includes a pond on-site that (may or) may not discharge to a surface water.





Permit Coverage

Sand & Gravel General Permit



Ecology
Inspector will
ask “to see
this
important
document?”

The one that provides you coverage...





Permit No. [Permit Number]
Coverage Effective Date: April 1, 2021
Permit Issuance Date: February 17, 2021
Expiration Date: March 31, 2026



THE SAND AND GRAVEL GENERAL PERMIT
COVERAGE PAGE - NON-PORTABLE OPERATIONS

Name & Mailing Address

[Person Name (Legal Res. Party)]
[Org Name (Legal Res. Party)]
[Org Address1 (Legal Res. Party)]
[Org Address2 (Legal Res. Party)]
[Org City (Legal Res. Party)], [Org State (Legal
Res. Party)] [Org Zipcode (Legal Res. Party)]

Facility/Site Name & Location

[Site Name]
[Site Address]
[Site City], [Site State] [Site Zipcode]

Site Contact

[Site Contact Person Name]

Site Contact Phone Number

[Site Contact Phone]

NAICS Codes Representing Activities

212319, ECY002

Facility/Site Status

[Facility Status]

Monitoring Point Information

<u>Monitoring Point Identifier</u>	<u>Monitoring Point Name</u>	<u>Latitude / Longitude</u>	<u>NACIS Code(s)</u>	<u>Type of Discharge</u>	<u>Outfall Type</u>	<u>Name of Surface Waterbody</u>
G002	4	47.845987 -122.022844	212319	Type 3 Stormwater	Groundwater	N/A
G003	5	47.845984 -122.022843	212319 ECY002	Process Water	Groundwater	N/A
S001	Tributary to French Creek	47.849773 -122.026626	212319 ECY002	Process Water	Surface Water Body	Tributary to French Creek
S002	Tributary to Snohomish River	47.83767 -122.0241	212319	Type 3 Stormwater	Surface Water Body	Tributary to Snohomish River

Rachel McCrea

Rachel McCrea
Water Quality Section Manager
Northwest Regional Office

Ecology
inspector will
ask to see
“these
important
documents”

The “Plan, Map, and Records” an Ecology inspector will ask to see...



Site Management Plan (SMP) + Site Map



Erosion and
Sediment
Control Plan
(ESCP)



Monitoring
Plan



Stormwater
Pollution
Prevention
Plan
(SWPPP)



Spill Control
Plan

How Often Does my SMP Need to be Updated?

During your
annual SMP
review

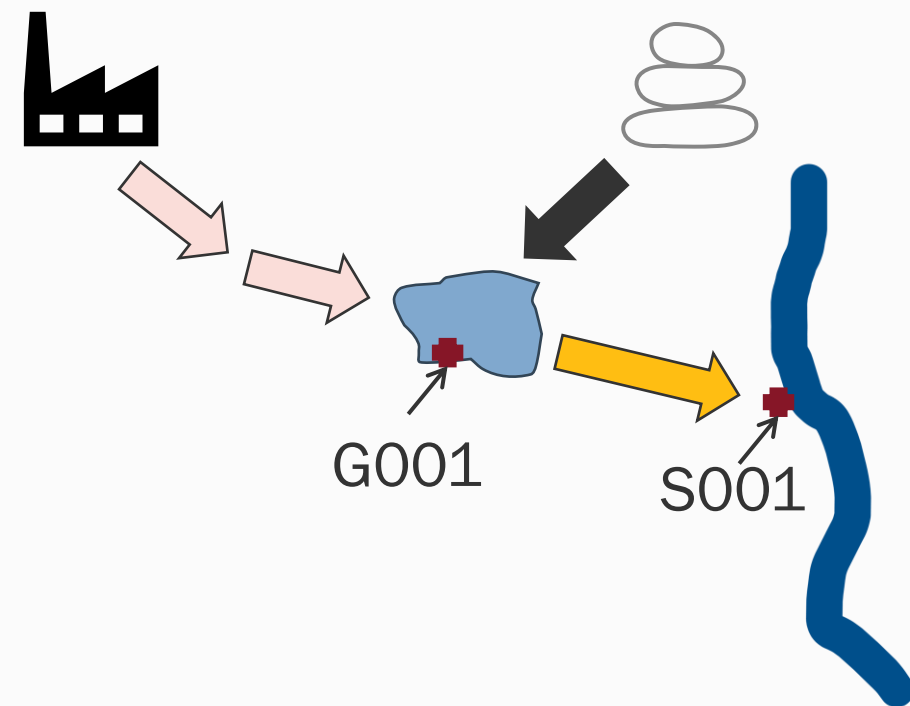
- Note the date of review
- Note the names of the personnel that conducted the review

Most permittees
will not need to
make significant
changes

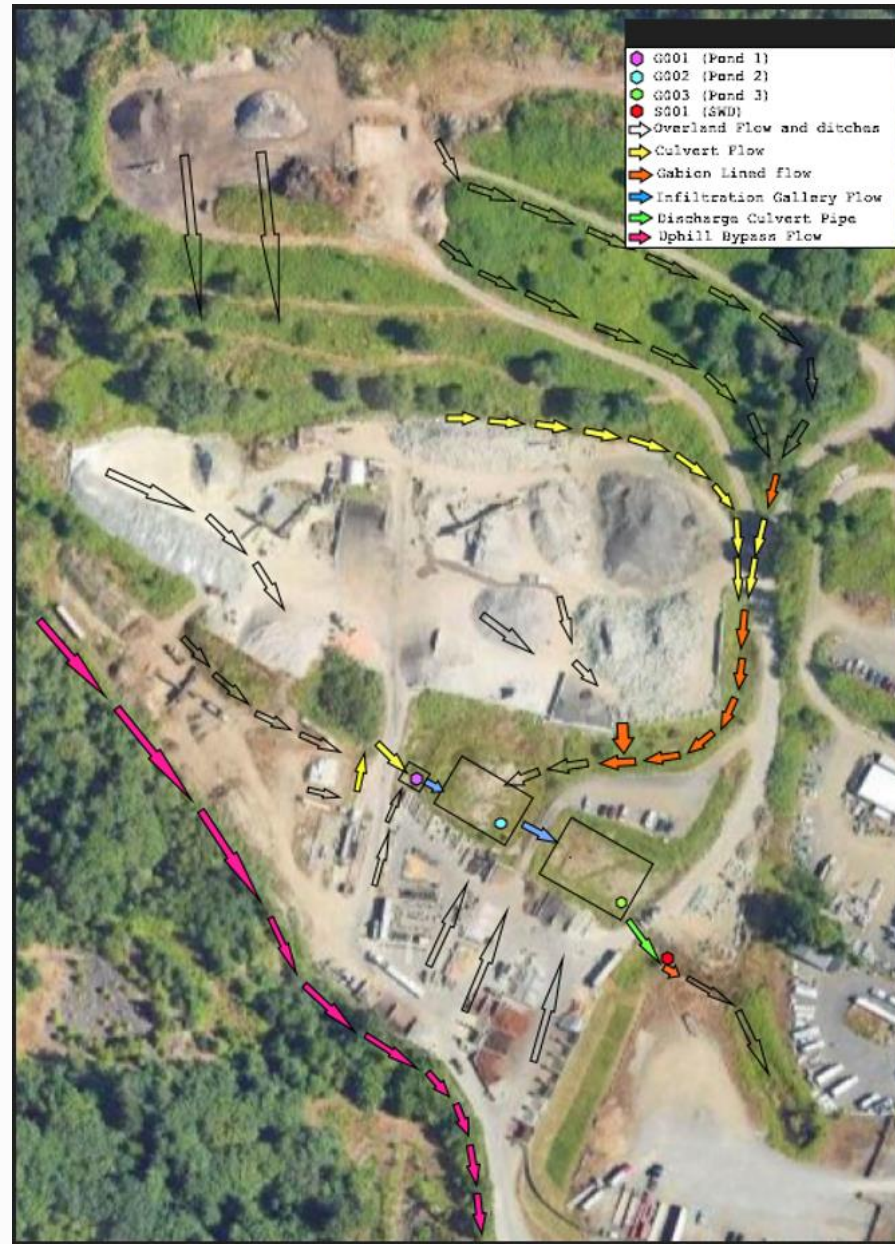
- Note all minor site changes
- Note new BMPs in response to a violation

Site Map

Scale	<ul style="list-style-type: none"> • Or distances between structures and drainage systems
Outfalls & Monitoring Points	<ul style="list-style-type: none"> • Identifiers used on Discharge Monitoring reports • Surface Water or groundwater • Process water or stormwater
Drainage Features	<ul style="list-style-type: none"> • Drainage direction • Rivers, lakes, wetlands, etc. • Ditches & ponds
Industrial Areas	<ul style="list-style-type: none"> • Storage areas • Vehicle and equipment cleaning areas • Processing area



Example Site Map



Example Site Map



Coordinates for G001:
Latitude: 47.04746
Longitude: -122.81579

Coordinates for G002:
Latitude: 47.04852
Longitude: -122.81480

Coordinates for MP01:
Latitude: 47.04840
Longitude: -122.81311

Coordinates for S001:
Latitude: 47.04840
Longitude: -122.81311

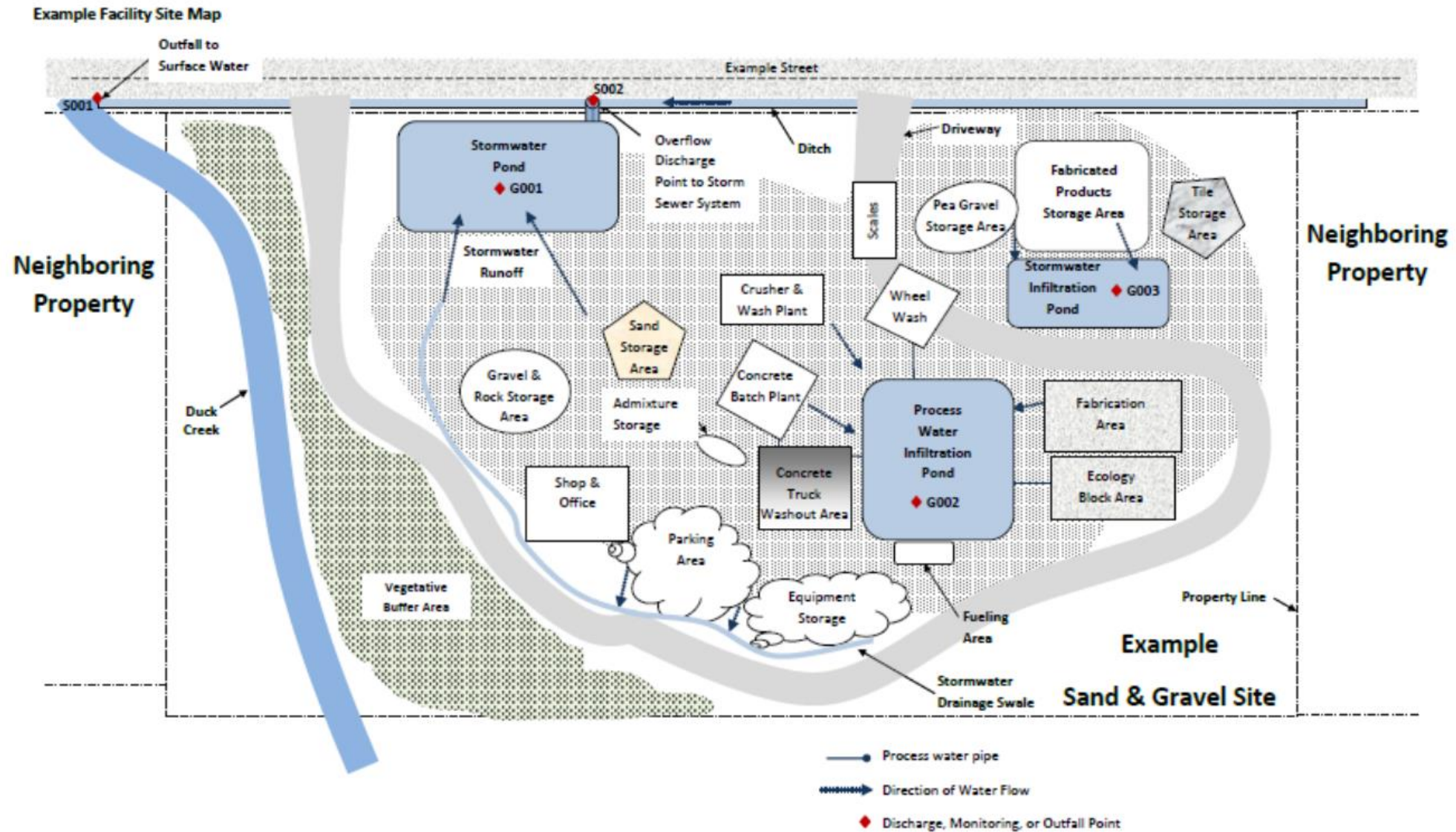
Coordinates for S002:
Latitude: 47.04850
Longitude: -122.81579

Coordinates for G004:
Latitude: 47.04746
Longitude: -122.81597

Example Site Map



Example Site Map



Site Management Plan (SMP)



Erosion and
Sediment
Control Plan
(ESCP)



Monitoring
Plan



Stormwater
Pollution
Prevention
Plan
(SWPPP)



Spill Control
Plan



Erosion and Sediment Control Plan (S6)

Sand & Gravel General Permit



Three (3) Types of Stormwater

No Industrial Activities



Type 1

Cleared Areas But No
Mining



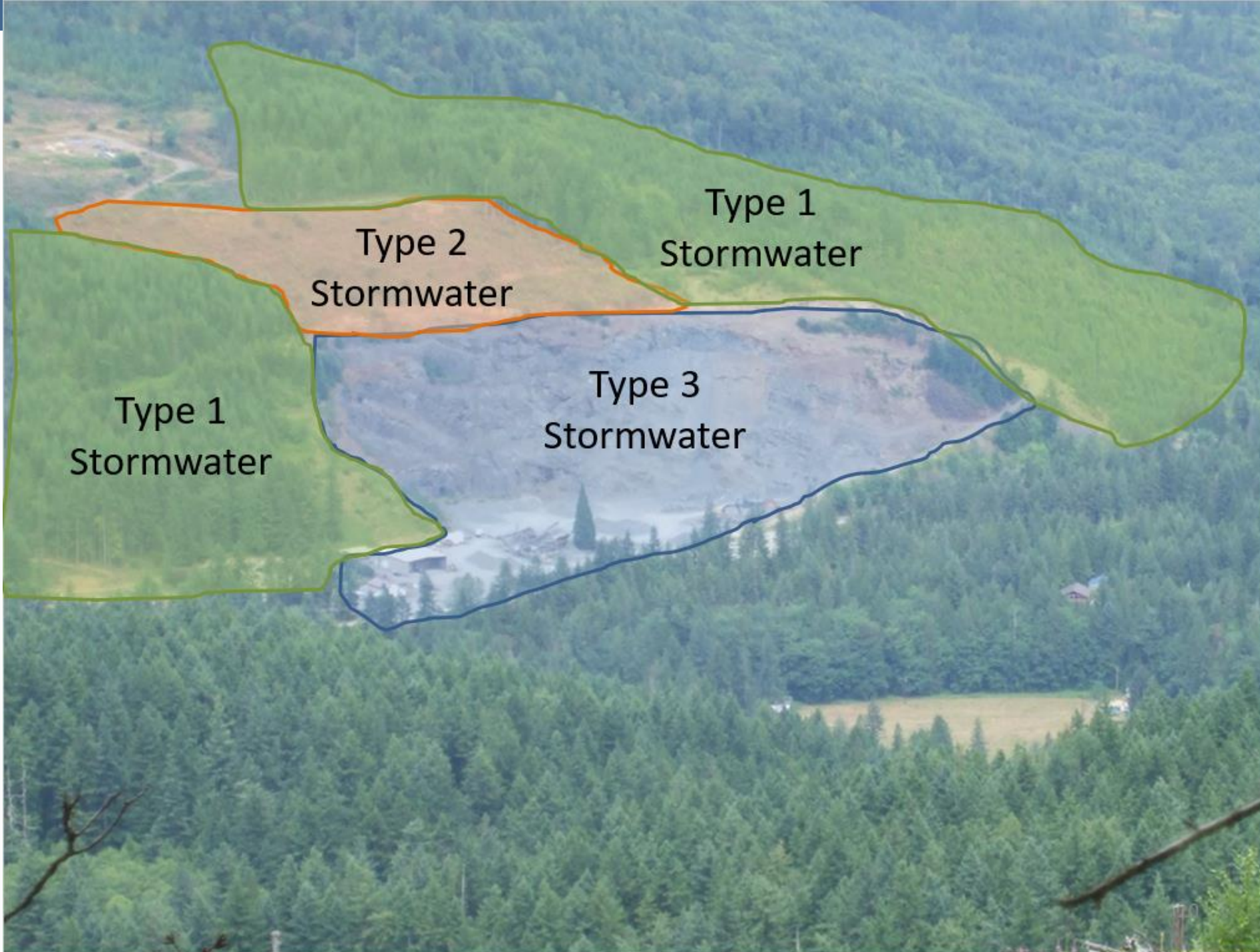
Type 2

Mining Areas and
Industrial Yards



Type 3

Appendix B

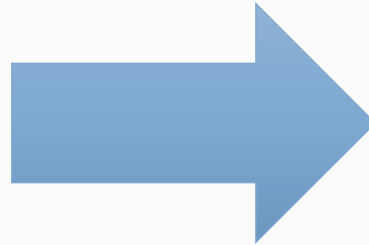


Stabilization BMPs



Use if you have temporarily or permanently ceased your mining or reclamation activities

Runoff Conveyance and Treatment BMPs



Special Condition S6.B



Monitoring Plan (S7)

Sand & Gravel General Permit



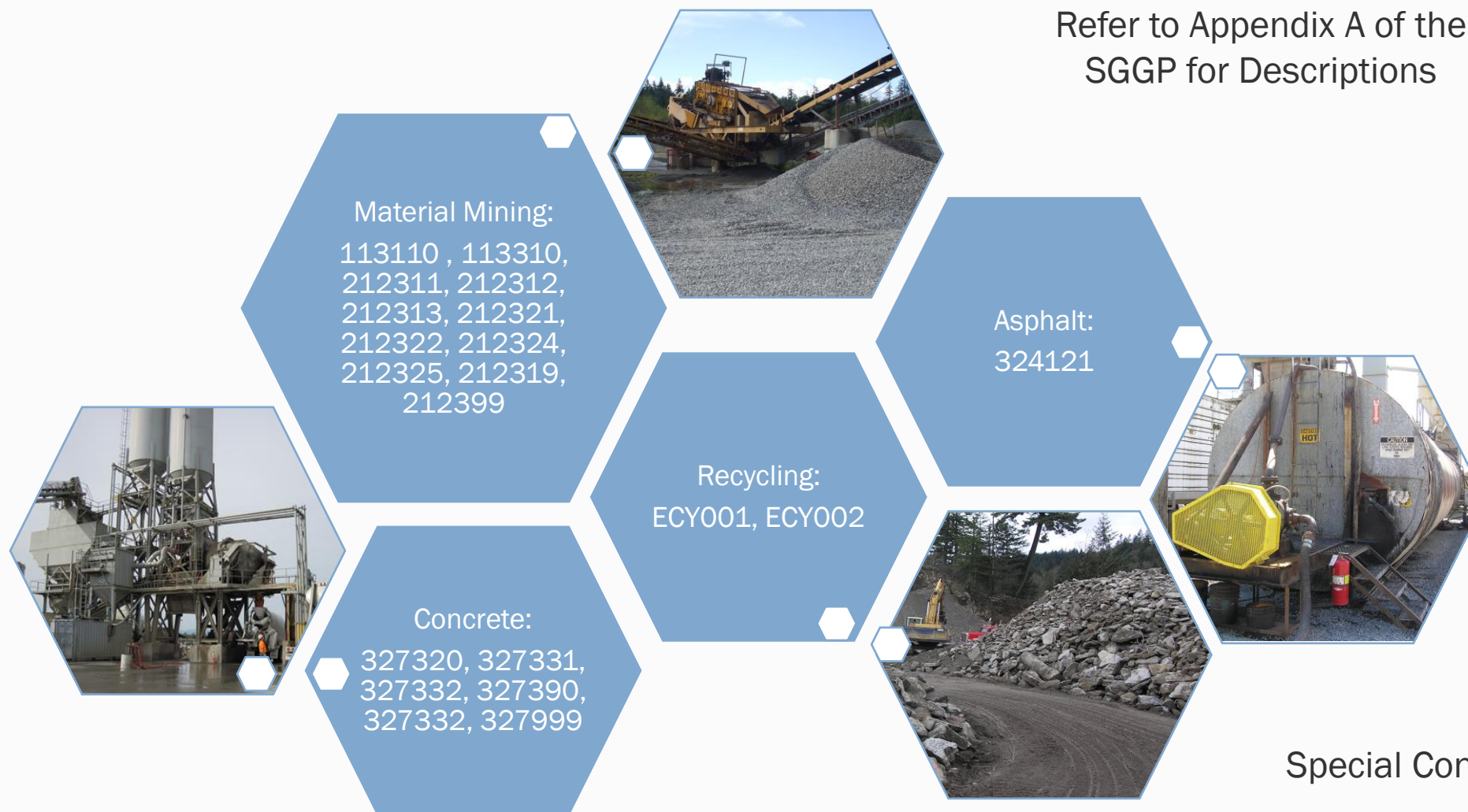
North American Industry Classification System (NAICS)

- Permit covers discharge from specific operations on your facility.
- Similar activities may require permit coverage.



NAICS / Ecology Codes

Refer to Appendix A of the
SGGP for Descriptions



Special Condition S1

Table 2: Effluent Limits and Monitoring Requirements for Process Water and Mine Dewatering Water

Type	NAICS Code (see Appendix A)	Discharge to:	pH		Turbidity (NTU)		Total Suspended Solids (TSS)	Oil Sheen ³	Total Dissolved Solids (TDS)
			Min	Max	Average Monthly	Maximum Daily	Average Quarterly		
Process Water, Mine Dewatering Water	113110, 113310, 212312, 212313, 212319 ⁴ , 212399	Surface	Quarterly ¹		Two/Month ²		Quarterly ¹	Daily when runoff occurs	----
			6.5	8.5	50	50	40 mg/l	No Discharge	----
		Ground	Quarterly ¹		----		----	Daily when runoff occurs	----
			6.5	8.5	----		----	Visible Sheen	----
	212321	Surface	----		Two/Month ²		Quarterly ¹	Daily when runoff occurs	----
			----		50	50	25 mg/l	No Discharge	----
		Ground	----		----		----	Daily when runoff occurs	----
			----		----		----	No Discharge	----
	212311, 212324, 212325,	Surface	----Surface Water Discharge Not Permitted----						
		Ground	Quarterly ¹		----		----	Daily when runoff occurs	----
			6.5	8.5	----		----	No Discharge	----
	212322	Surface	----		Two/Month ²		Quarterly ¹	Daily when runoff occurs	----
			----	----	50	50	25 mg/l	No Discharge	----
		Ground	----		----		----	Daily when runoff occurs	----
			----	----	----		----	No Discharge	----
	327320, 327331 327332, 327390, 327999, ECY002	Surface	One/Month		Two/Month ²		Quarterly ¹	Daily when runoff occurs	----
			6.5	8.5	50	50	40 mg/l	Visible Sheen	----
		Ground	One/Month		----		----	Daily when runoff occurs	Monthly
			6.5	8.5	----		----	Visible Sheen	500 mg/l
	324121 ⁵ , ECY001	Surface	----Surface Water Discharge Not Permitted----						
		Ground	One/Month		----		----	Daily when runoff occurs	----
			6.5	8.5	----		----	Visible Sheen	----

Special
Condition S2

Table 3: Effluent Limits and Monitoring Requirements for *Type 2* and *Type 3* Stormwater

Type	NAICS Code (see Appendix A)	Discharge to	pH		Turbidity (NTU)		Oil Sheen ³
			Min	Max	Average Monthly	Maximum Daily	
Stormwater (Type 2 and 3) Type 2 monitoring only applicable during earth moving activities	327320, 327331, 327332, 327390, 327999, ECY002	Surface	One/Month		Two/Month ²		Daily when discharge occurs
			6.5	8.5	50	50	No Discharge
		Ground	One/Month		---		Daily when discharge occurs
			6.5	8.5	---		No Discharge
	113110, 113310, 212312, 212313, 212319, 212399, 212324, 212325, 324121, ECY001	Surface	Quarterly ¹		Two/Month ²		Daily when discharge occurs
			6.5	8.5	50	50	No Discharge
		Ground	Quarterly ¹		---		Daily when discharge occurs
			6.5	8.5	---		No Discharge
	212311, 212321, 212322	Surface	---		Two/Month ²		Daily when discharge occurs
			---	---	50	50	No Discharge
		Ground	---		---		Daily when discharge occurs
			---	---	---	---	No Discharge

Notes for Tables 2 and 3:

- Quarterly means at least one sample in each of the periods of January to March, April to June, July to September, and October to December.
- When required to sample turbidity twice a month, there must be at least 24 hours between sampling.
- The discharge of sheen or petroleum products to *waters of the State* is a violation and must be reported as a violation. The presence of a visible sheen at a *discharge point* is not a violation if there is no discharge of sheen or petroleum products to water of the state and if the Permittee corrects the problem in a timely manner, notes the occurrence in their Discharge Monitoring Report (DMR), explains in the DMR the cause, and describes the solution. (Also see conditions [S4.F.2](#), [S5.C](#), [S9.C](#) and [S10.E](#))
- The discharge of process water associated with bitumens (native mining), bituminous limestone quarrying, bituminous sandstone quarrying to surface water is prohibited.
- The discharge of process water from wet scrubbers to groundwater is prohibited.

Oil Sheen Reporting Instructions

If no oil sheen was observed enter 0, N, No.

If oil sheen was observed enter 1, Y, Yes.

- Correct the problem in a timely manner.
- Report on your DMR the cause of the oil sheen.
- Report on your DMR the actions you took in response to observing the sheen.



pH Effluent Limit & Monitoring

- Relevant to both Surface Water and Groundwater Discharges
- pH Limit - range of 6.5 to 8.5



Special Condition S2

Turbidity Limit & Monitoring

- Only relevant to Surface Water Discharges
- Turbidity Limit - 50 NTU



0

50

100

500

1000

5000 NTU

16

Special Condition S2

TSS and TDS Limits & Monitoring

- **Surface Water Discharges**

- Total Suspended Solids [TSS]
- 25-40 mg/L – Quarterly



Fish can't
see

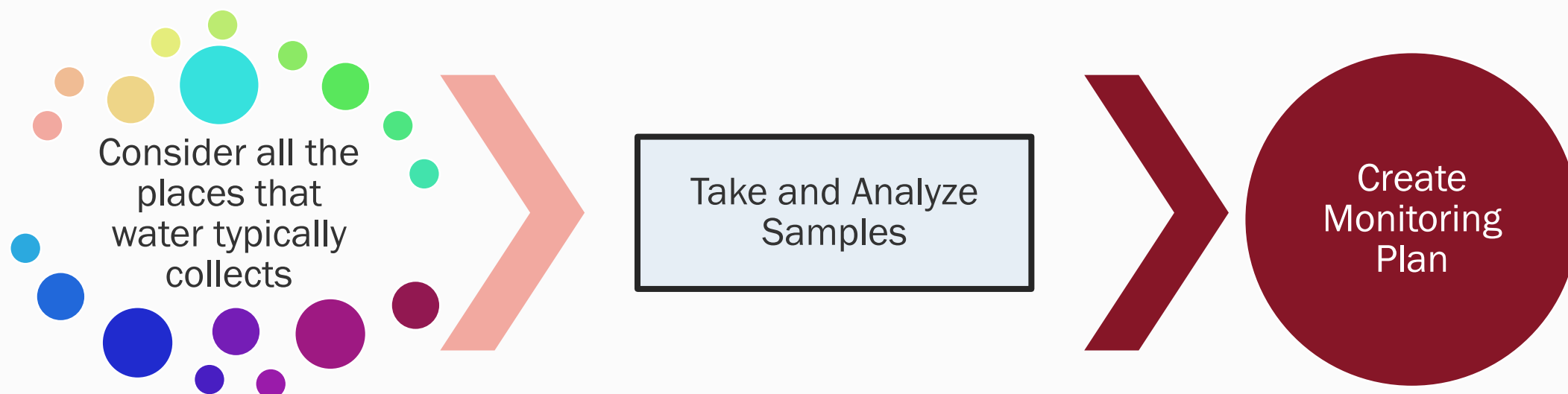
- **Groundwater Discharges**

- Total Dissolved Solids [TDS]
- 500 mg/L - Monthly



Invisible
Dissolved
solids

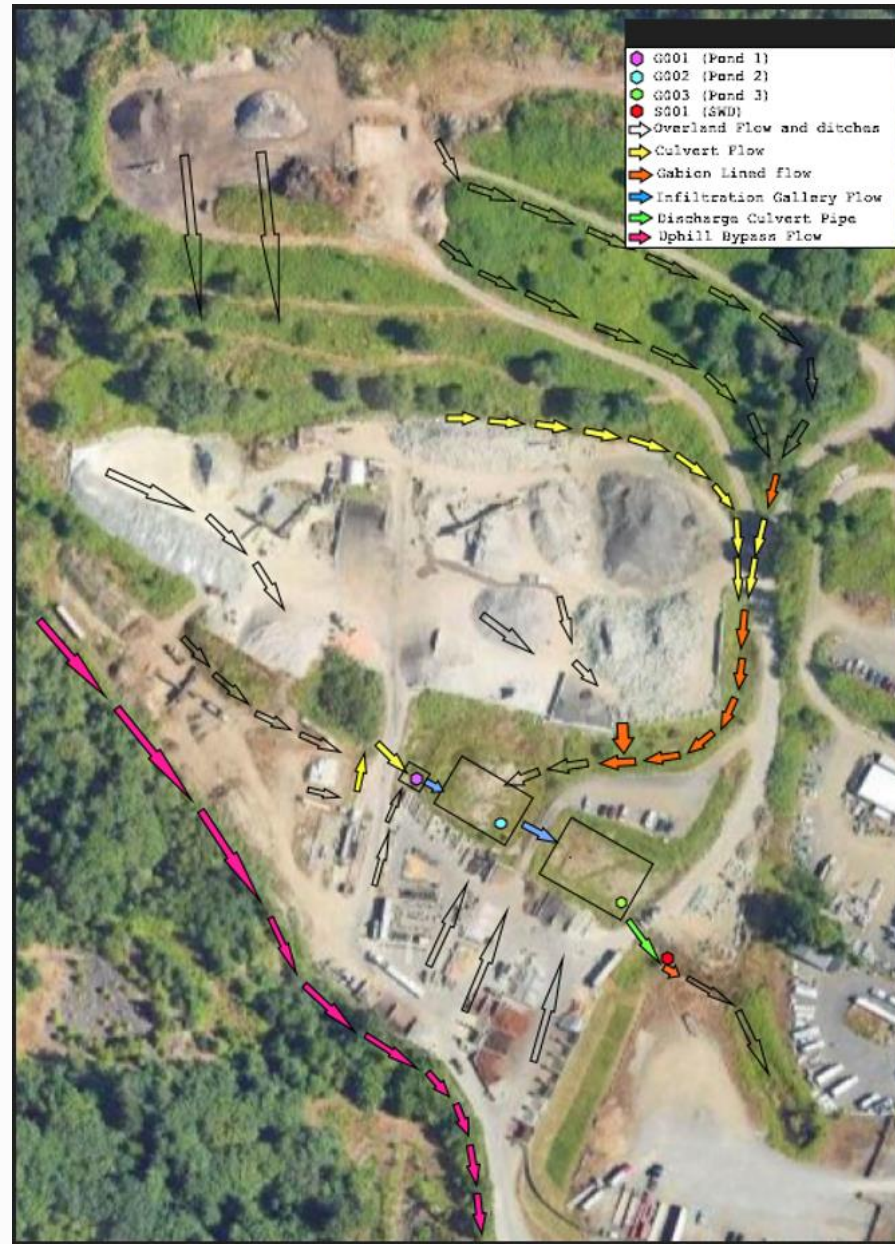
Representative Sampling



Questions...

- How similar are the contributing conditions?
- How uniform were the values?

Example Site Map



Not Cause or Contribute to a Violation of Standards

Groundwater
Quality
Standards

Surface
Water Quality
Standards

Sediment
Management
Standards

No visible
increase in
turbidity,
objectionable
color, or oil
sheen

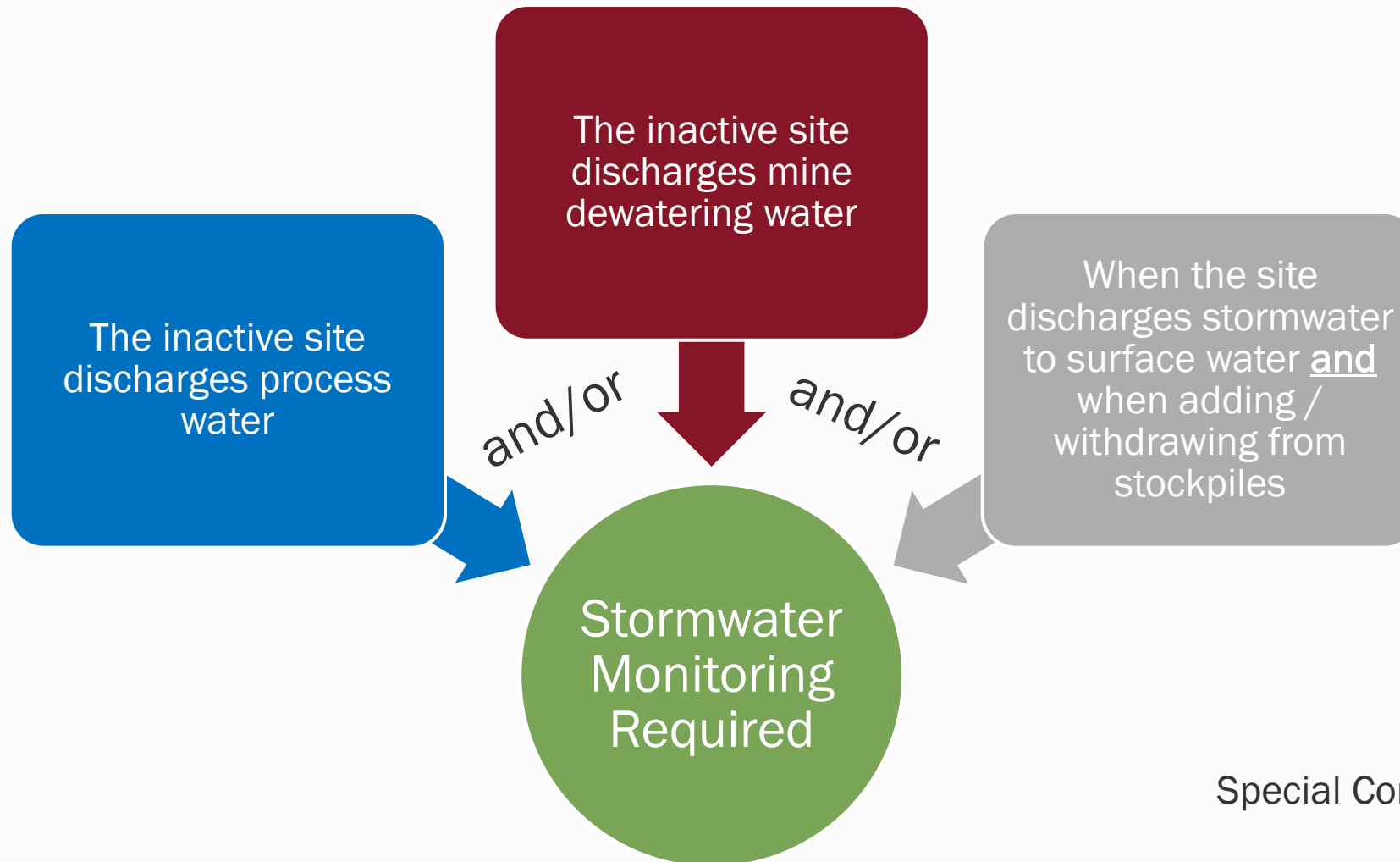
Monthly Visual Inspection

- Each surface water discharge point when discharges occur
- Look for visible changes in the receiving water:
 - Turbidity
 - Color
- Include record of inspection in monitoring plan



Special Condition S4.F.1

Stormwater Monitoring at Inactive Sites Not Required Unless...



Special Condition S4.C

Wet Season Inspection (ask yourself)

- While its raining – Do you see suspended solids, oil and grease, discoloration, turbidity in your stormwater runoff?
- Is your list of pollutant sources accurate?
- Are your BMPs working?
- Is the runoff going where you think it's going? (Does your site map match?)



Dry Season Inspection (ask yourself)

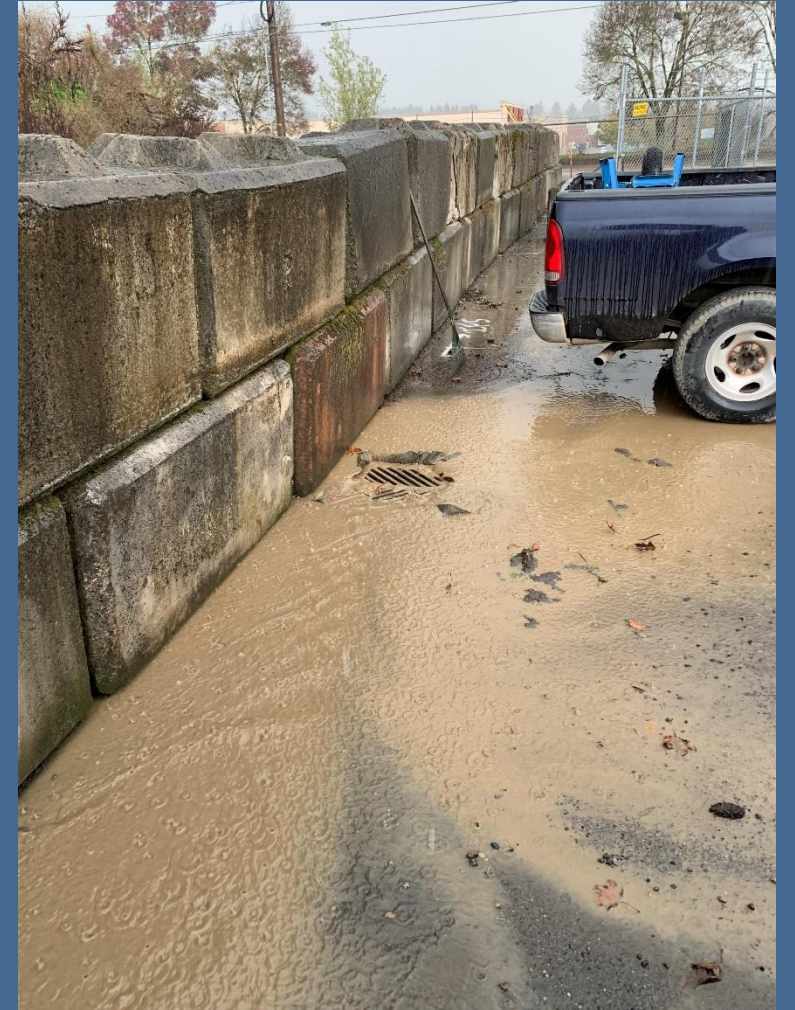
- When it's been dry for a week – Do you see water / runoff on your site? What is the source?
- Is process water going to the stormwater drainage system?
- Is it possible to eliminate discharges?





Stormwater Pollution Prevention Plan (SWPPP) (S8)

Sand & Gravel General Permit



Measures to Prevent Commingling



Measures to Prevent Commingling



Runoff Conveyance and Treatment BMPs



Inventory of Materials & Pollutant Sources

- Toxic materials or chemicals
- Cement admixtures
- Fuels
- Lubricants
- Tar
- Release Agents
- Paint



Secondary Containment

- Provide roof over secondary containment
- Or, describe how you will dispose of trapped water



- Double- walled tanks acceptable for secondary containment

Spill Kits



Petroleum Transfer Operations



Vehicle & Equipment Cleaning



- Clean vehicles / equipment under cover or in a bermed area
- Prevent commingling of washwater and stormwater
- Adding clarifying language around the usage of soaps to clean vehicles & equipment in the reissuance.

Vehicle & Equipment Cleaning



Do not dump concrete
washout water onto
bare ground



Treat washout water in
a lined impoundment
prior to discharge

Example of How to **NOT** Handle Truck Washout



Example of How to Handle Truck Washout



Sediment Track Out

- Prevent sediment from going to surface water / storm drains
- Turbidity limits apply
- BMPs:
 - Crushed rock at entrance
 - Wheel Wash
 - Tire Baths
 - Street cleaning



Special Condition
S8.E.12

Maintenance



Lined Impoundments



Best Management Practices (BMPs)



Spill Control Plan (S9)

Sand & Gravel General Permit



Materials of Concern

- Oil and petroleum products
- Materials designated as Dangerous or Extremely Hazardous Waste
- Other materials which may pollute groundwater and surface water



Spill Control Plan

- Who you going to call?
Describe your reporting system
- Prevention measures / storage requirements
- Handling procedures / plan for containment and cleanup



Special Condition S9.B &
Special Condition S10.F

Spill Response (and Recording)





Inspections

Sand & Gravel General Permit



When Equipment Operates:

Inspect Oil / Water Separators



- At least once per month October 1 – April 30
- During and immediately after large storm events

When Equipment Operates:

Inspect Equipment & Vehicles



- Inspect weekly
- Look for oil, hydraulic fluid, antifreeze, etc.

When Equipment Operates:

Inspect Surface Water & Groundwater Discharge Points



Daily visual
monitoring for oil
sheen when runoff
occurs

Inactive Site Inspections

Two Options:

1. Have a registered Professional Engineer certify every three years that the facility complies with the permit
2. Or, conduct a yearly Wet Season Inspection yourself



Inspection Reports

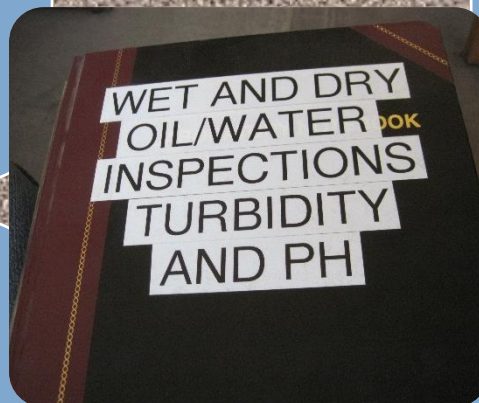
Inspection reports can be in the form of:

- Logbooks
- Checklists
- WSDOT Records
- MSHA Records

Identify maintenance tasks completed during the inspection

Summary of inspection, name of personnel, inspection date, observations related to SMP implementation

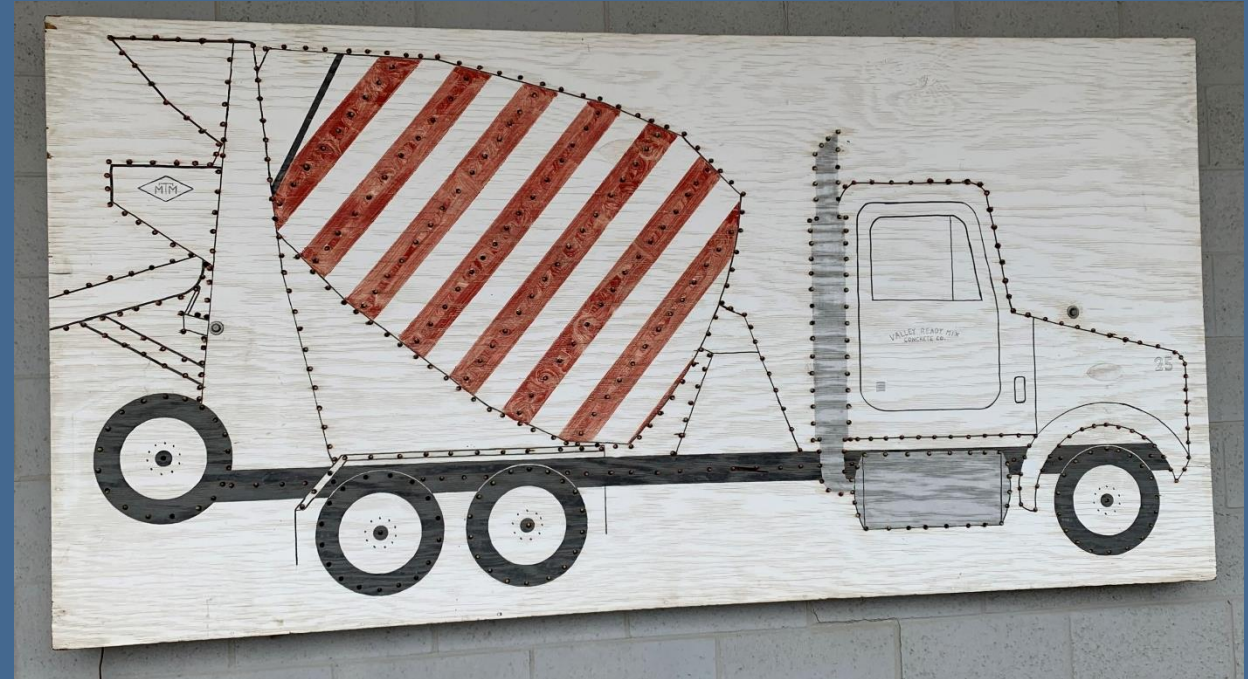
Identify any maintenance tasks to be completed after the inspection





Reports & Records

Sand & Gravel General Permit



Electronic Reporting

Submitting DMRs electronically through Ecology's Water Quality Permitting Portal

- Unless you have been approved for an Electronic Reporting Waiver (then submit via mail)
- Ecology typically only grants waivers to permittees that do not have a computer, printer, or internet connection

Electronic Reporting

Submit an “Electronic Signature Account Form” or
“Electronic Reporting Waiver Request Form”

For Active Sites

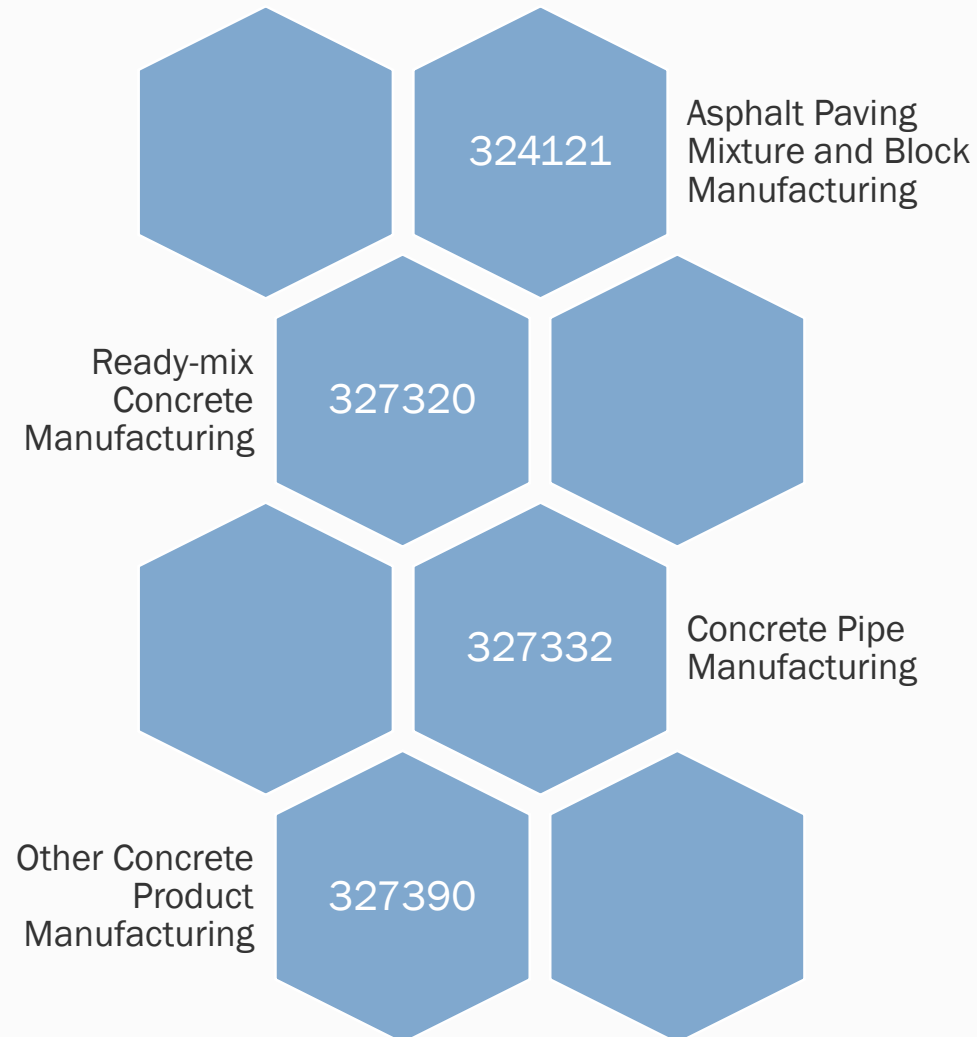
2 months before your first
Discharge Monitoring Report
(DMR) is due for:

Permittees that have
an electronic
signature account do
not need to resubmit

Inactive Sites

New
permittees

Production Reporting



- Report your production range for the previous year
- Ecology uses the information to calculate permit fees

Reporting Permit Violations

- Notify Ecology within 24 hours of any violation
 - If you notify us within 24 hours of the violation we can waive the detailed written report
- Submit a detailed written report within 30 days of the Violation



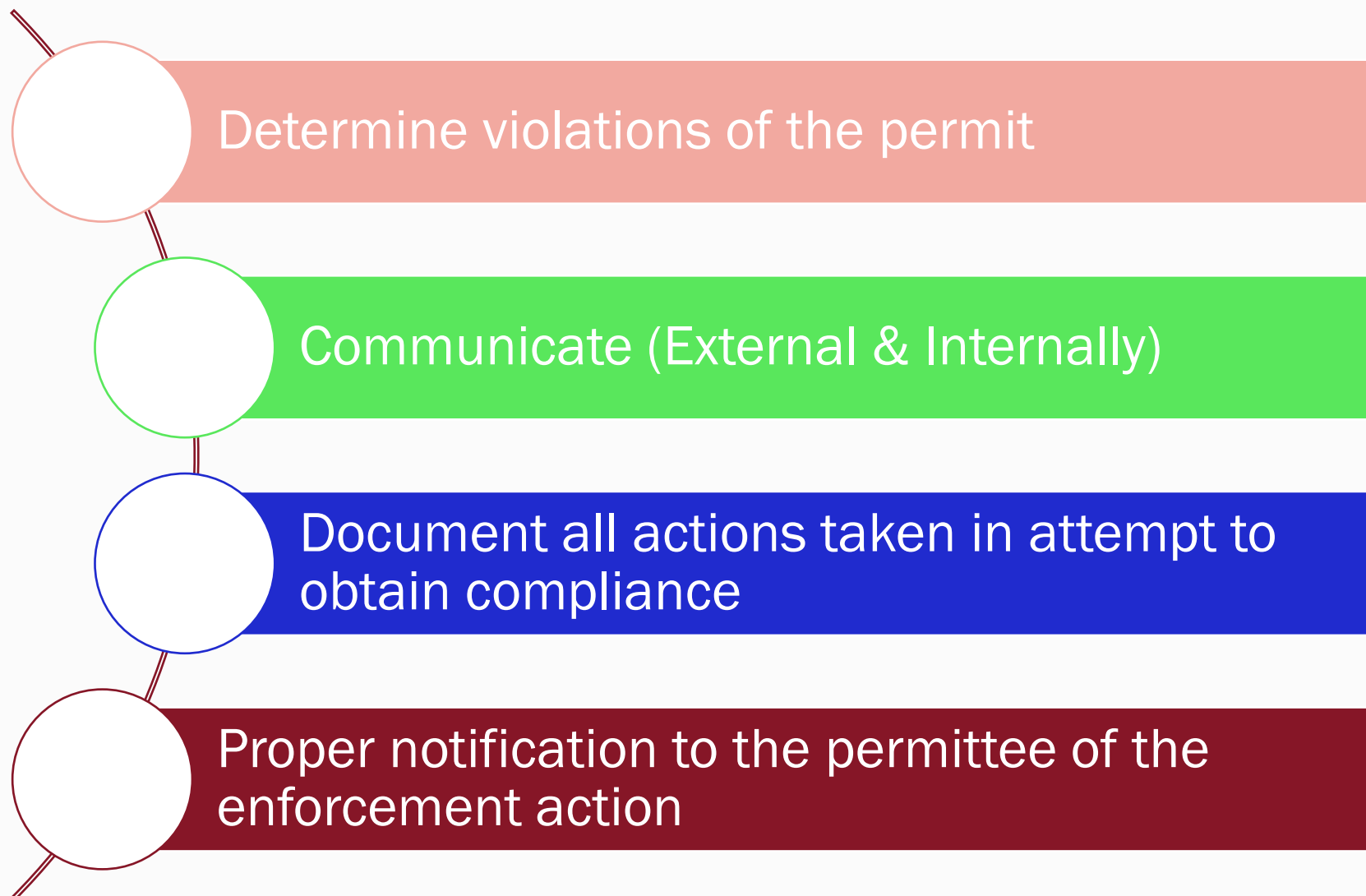


Enforcement Terms

Sand & Gravel General Permit



Enforcement Steps



Informal Enforcement Terms

Technical Assistance

- Calls, emails, letters, visits, meetings

Inspections

- Inspection Reports
- Corrective Action Required Form

Warning Letters

- Used to inform a facility of non-compliance
- First step in the process of escalation
- Explains what is expected and the consequences of not complying

Formal Enforcement Terms

Notice of Violation (NOV)

- Formal notice of violation of permit conditions
- Requires a report to be submitted identifying steps taken

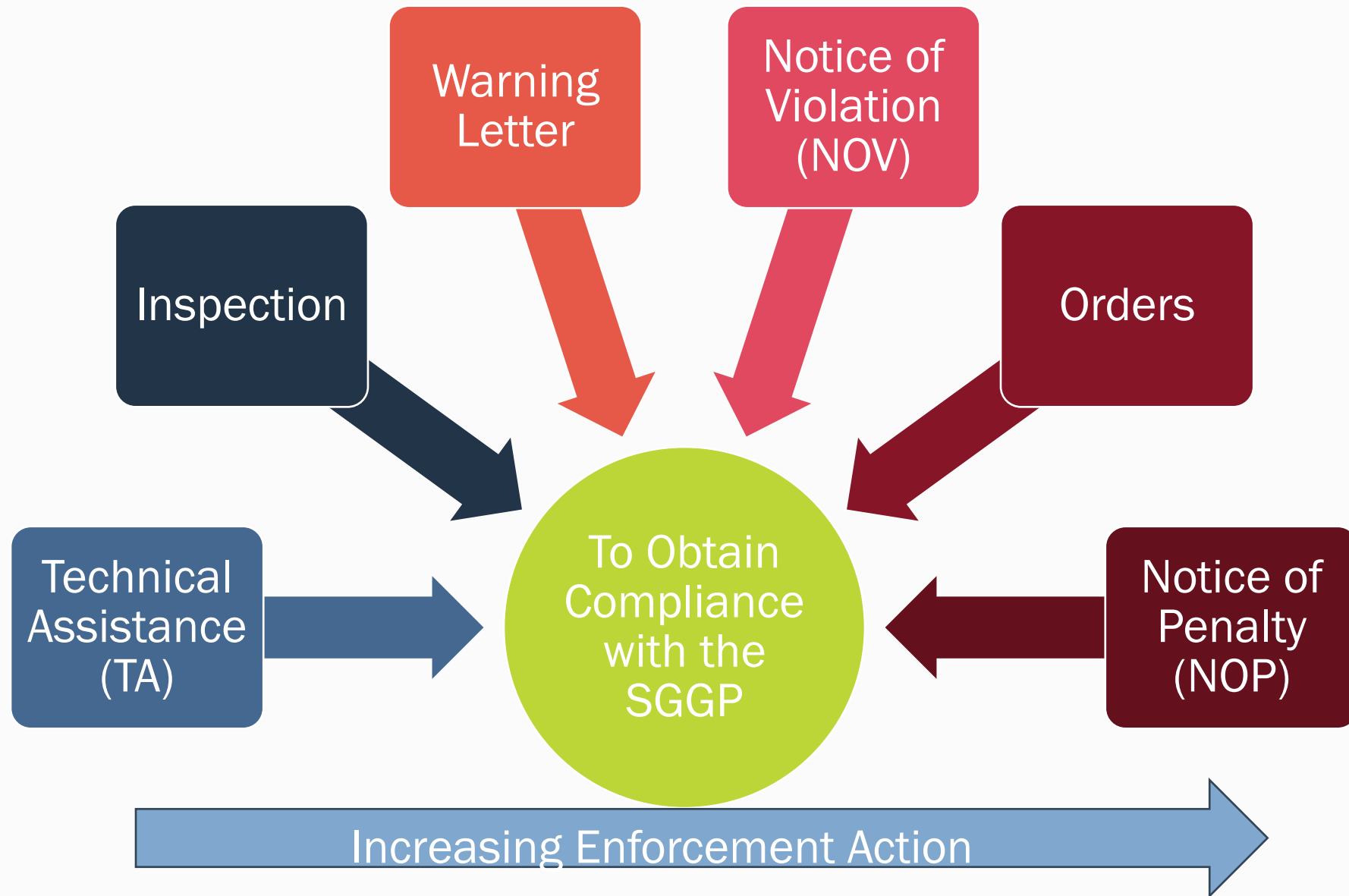
Orders

- Administrative, Agreed order or Consent order, Companion order, Amended Order, Immediate action order, Joint Order and Penalty, and Moratoriums (limited use)

Notice of Penalty (NOP) and Field Tickets

- Economic motivation to comply – not intended to be punitive
- Maximum of \$10,000 per day per violation in addition to other enforcement actions

Compliance with the SGGP





Conclusion...

Sand & Gravel General Permit

Issuance Date: February 17, 2021
Effective Date: April 1, 2021
Expiration Date: March 31, 2026

THE SAND AND GRAVEL GENERAL PERMIT

A NATIONAL POLLUTANT DISCHARGE ELIMINATION SYSTEM

AND

STATE WASTE DISCHARGE GENERAL PERMIT

For Process Water, Stormwater, and Mine Dewatering Water Discharges Associated with Sand and Gravel Operations, Rock Quarries, and Similar Mining Facilities, Including Stockpiles of Mined Materials, Concrete Batch Operations and Hot Mix Asphalt Operations

State of Washington
Department of Ecology
Olympia, Washington

In compliance with the provisions of
The State of Washington Water Pollution Control Law
Chapter 90.48 Revised Code of Washington
and
The Federal Water Pollution Control Act
(The Clean Water Act)
Title 33 United States Code, Section 1251 et seq.

Until this permit expires, is modified or revoked, Permittees that have properly obtained coverage under this general permit are authorized to discharge in accordance with the special and general conditions which follow.

Electronic signature-see final PDF

Vincent McGowan, P.E.
Water Quality Program Manager
Washington State Department of Ecology

Read the Sand & Gravel General Permit



Issuance Date: February 17, 2021
Effective Date: April 1, 2021
Expiration Date: March 31, 2026

THE SAND AND GRAVEL GENERAL PERMIT

A NATIONAL POLLUTANT DISCHARGE ELIMINATION SYSTEM

AND

STATE WASTE DISCHARGE GENERAL PERMIT

For Process Water, Stormwater, and Mine Dewatering Water Discharges Associated with Sand and Gravel Operations, Rock Quarries, and Similar Mining Facilities, Including Stockpiles of Mined Materials, Concrete Batch Operations and Hot Mix Asphalt Operations

State of Washington
Department of Ecology
Olympia, Washington

In compliance with the provisions of
The State of Washington Water Pollution Control Law
Chapter 90.48 Revised Code of Washington
and
The Federal Water Pollution Control Act
(The Clean Water Act)
Title 33 United States Code, Section 1251 et seq.

Until this permit expires, is modified or revoked, Permittees that have properly obtained coverage under this general permit are authorized to discharge in accordance with the special and general conditions which follow.

Electronic signature-see final PDF

Vincent McGowan, P.E.
Water Quality Program Manager
Washington State Department of Ecology

Early Informal Feedback Period: Current 2021 Permit

- Participation is encouraged so Ecology can release a well-informed Draft Sand & Gravel General Permit
- Review the Current 2021 General Permit and provide your feedback
- First step in the process to reissue



Early Informal Feedback Period: Current 2021 Permit

Submit informal feedback online (*our preferred method*)

- [Online comment form](#), or
- https://wq.ecology.commentinput.com/?id=VFWBQCGP9&utm_medium

Submit by U.S. mail (postmarked by March 12, 2024)

Eric Daiber, Sand & Gravel General Permit Writer
Water Quality Program
Washington State Department of Ecology
PO Box 47696
Olympia, WA 98504-7696

Questions



Eric Daiber

Eric.Daiber@ecy.wa.gov

(360) 742-1511

The Sand & Gravel General Permit is available at:
Ecology.wa.gov/SandandGravel

Contact Information for the Sand & Gravel General Permit

If you need to stop by the regional office:	If your Facility is in one of these Counties:	If you need assistance with permit requirements, or have site-specific questions please contact:	If you need help finding or completing applications, or other forms, or drafting public notices please contact:
Central Region Office 1250 West Alder Street Union Gap, WA 98903-0009	Benton, Chelan, Douglas, Kittitas, Klickitat, Okanogan, and Yakima	Alex Barnes alex.barnes@ecy.wa.gov	Joy Espinoza crowqpermits@ecy.wa.gov
Eastern Region Office 4601 North Monroe Street, Suite 202 Spokane WA 99205-1295	Adams, Asotin, Columbia, Ferry, Franklin, Garfield, Grant, Lincoln, Pend Oreille, Spokane, Stevens, Walla Walla, and Whitman	David Ennis David.Ennis@ecy.wa.gov	TBH
Northwest Region Office PO Box 330316 Shoreline, WA 98133-9716	Island, King, Kitsap, and Snohomish	Jay Fennell jay.fennell@ecy.wa.gov	Tricia Miller tricia.miller@ecy.wa.gov
	San Juan and Skagit	Sylvia Graham sylvia.graham@ecy.wa.gov	
	Whatcom	Jen Baptist jen.baptist@ecy.wa.gov	
Southwest Region Office P.O. Box 47775 Olympia WA 98504-7775	Clark, Cowlitz, Lewis, Pacific, Skamania, Thurston, and Wahkiakum	Dincer Kayhan dincer.kayhan@ecy.wa.gov	Jen Smith jen.smith@ecy.wa.gov
	Clallam, Grays Harbor, Jefferson, Mason, and Pierce	Eli Newby eli.newby@ecy.wa.gov	



Thank you

End of presentation