

Excellence in Concrete

2025

Awards Program



**WASHINGTON AGGREGATES
& CONCRETE ASSOCIATION**

The Judges' Panel

Jim Borgen, Jury Foreman, Vice President of Sales, Northwest Cement, Lehigh Cement, Retired

Don Davies, PE, SE, Founder, Davies-Crooks Associates

Vania Del Carmen Moreno-Colin, Senior Civil Engineering Student, UW, UW ACI Student Chapter President

Drew Jared, Regional Sales Manager, Ash Grove Cement Company

Joel Kipple, Project Manager, Senior Associate at Cary Kopczynski & Company

Patrick Matsche, Senior Director, Building Innovations, Structures and Sustainability Group, NRMCA

Scott C Meyers, Vice President PNW Estimating & Preconstruction at The Conco Companies

Jerred Nybo, General Manager, Rainier Division, Miles Sand & Gravel Co.

Ed Palushock, Associate Principal, AIA, LEED, AP BD+C, Mithun

Steve Read, P.E., Civil Engineer Supervisor, City of Seattle, Seattle Public Utilities, Retired

Ken Sahi, PE, NW Regional Manager, Krazan and Associates

Rob Shogren, Ph.D., MBA, PE, Technical Director, LafargeHolcim

John Tessem, Principal, DCI Engineers



Judges' Luncheon and project review meeting with WACA staff, Cory Shaw, and Mary Bauer

30 Submissions

Nine Categories

Architectural / Artistic - Non-Residential (Public Works, Commercial)

- Sound Transit Roosevelt Station
- Seattle Aquarium Ocean Pavilion
- TORGUSON SKATEPARK PROJECT
- Bacon and Eggs Skateable Art Sculpture
- Hale Park Skatepark

Architectural / Artistic - Residential (Driveways, Patios, Int/Ext Features)

- Paul & Tammy Mobley
- Hunts Point 2

High-Rise (16+ Stories)

- The Ayer
- Avenue Bellevue
- The Confidential
- Spire Condominiums
- Arrive

Infrastructure - Non-Transportation (Parking Garages, Public Works)

- Marion Street Pedestrian Bridge Replacement
- Union Street Pedestrian Bridge
- Richardson Well Yard Standpipe
- Lower Granite Dam PIT Tag Detectors Design-Build Project
- Lakeside Surf

Infrastructure - Transportation (Paving, Bridges, Mass Transit)

- Sound Transit Roosevelt Station
- Colman Dock
- NE 8th Street Eastrail Crossing
- SR 520, Trail Grade Separation at Northeast 40th Street
- FY 20 McChord Airfield Bridge Repair

Low-Rise (Up to 3 Stories)/Mid-Rise (4-15 Stories) - Non-Residential (Commercial, Schools, Industrial)

- P-401 REGIONAL SHIP MAINTENANCE FACILITY
- Hans Rosling Center for Population Health

Low-Rise (Up to 3 Stories)/Mid-Rise (4-15 Stories) - Residential (Single/Multi-Family)

- Sunset Court
- Stadium Apartments

Sustainable / Resilience (Pervious, LEED)

- Seattle Storm Center for Basketball Performance
- Unity Care NW - North Whatcom Health Center

Tilt-Up

- Portside Phase 3
- Hogum Bay Logistics Center



18 Finalists

Nine Categories

Infrastructure - Non-Transportation (Parking Garages, Public Works)

- Union Street Pedestrian Bridge
- Lower Granite Dam PIT Tag Detectors Design-Build Project

Infrastructure - Transportation (Paving, Bridges, Mass Transit)

- Sound Transit Roosevelt Station
- Colman Dock

Low-Rise (Up to 3 Stories)/Mid-Rise (4-15 Stories) - Non-Residential (Commercial, Schools, Industrial)

- P-401 REGIONAL SHIP MAINTENANCE FACILITY
- Hans Rosling Center for Population Health

Low-Rise (Up to 3 Stories)/Mid-Rise (4-15 Stories) - Residential (Single/Multi-Family)

- Sunset Court
- Stadium Apartments

Sustainable / Resilience (Pervious, LEED)

- Seattle Storm Center for Basketball Performance
- Unity Care NW - North Whatcom Health Center

Tilt-Up

- Portside Phase 3
- Hogum Bay Logistics Center

Architectural / Artistic - Non-Residential (Public Works, Commercial)

- Seattle Aquarium Ocean Pavilion
- Bacon and Eggs Skateable Art Sculpture

Architectural / Artistic - Residential (Driveways, Patios, Int/Ext Features)

- Paul & Tammy Mobley
- Hunts Point 2

High-Rise (16+ Stories)

- Avenue Bellevue
- Spire Condominiums



Infrastructure – Non-Transportation
(Parking Garages, Public Works)

UNION ST. PEDESTRIAN BRIDGE



Infrastructure – Non-Transportation
(Parking Garages, Public Works)

LOWER GRANITE DAM



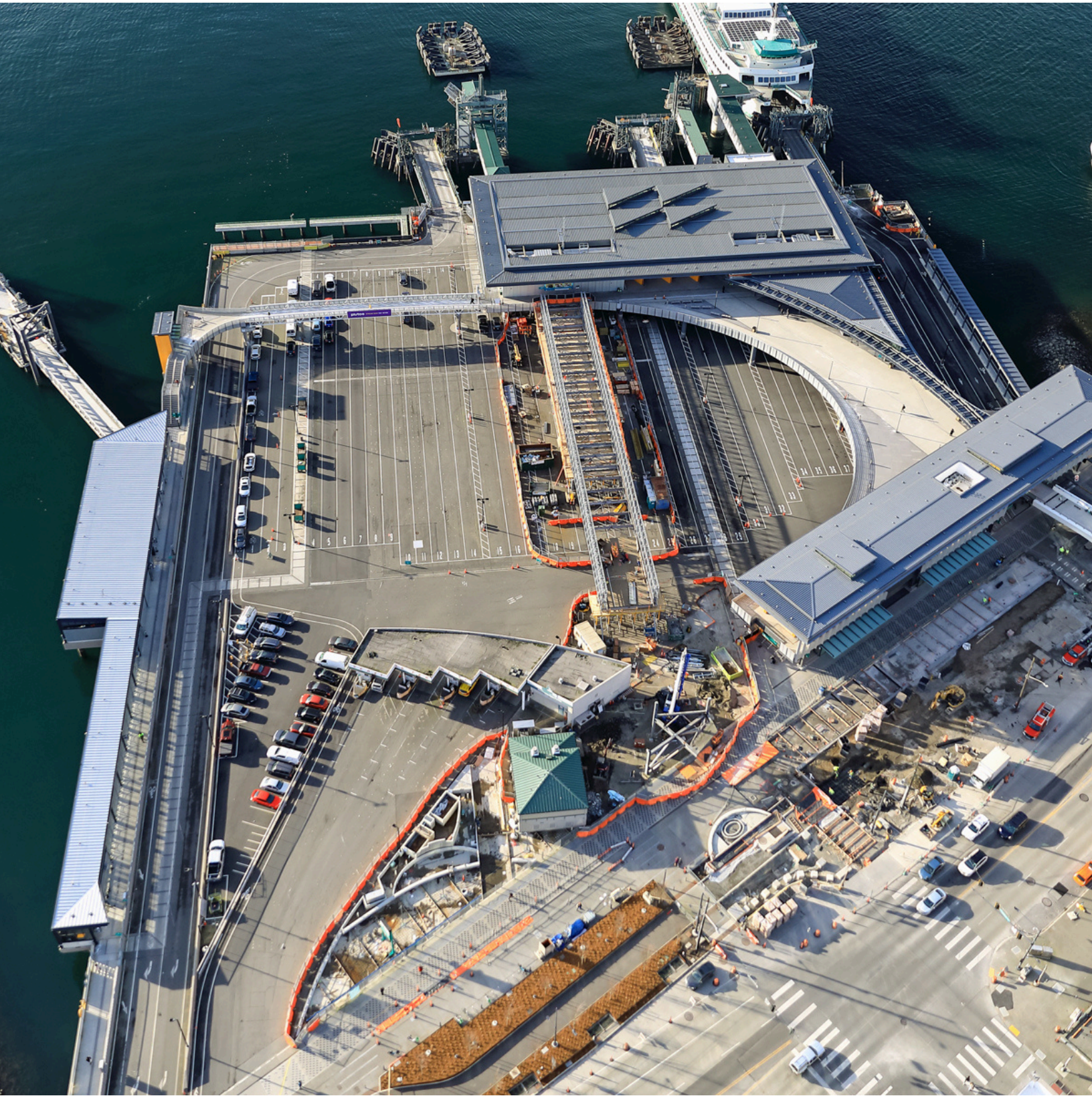
Infrastructure – Transportation
(Paving, Bridges, Mass Transit)

SOUND TRANSIT ROOSEVELT STATION



Infrastructure – Transportation
(Paving, Bridges, Mass Transit)

COLMAN DOCK



Low-Rise/Mid-Rise – Non-Residential
(Commercial, Schools, Industrial)

P-401 REGIONAL SHIP MAINTENANCE FACILITY



Low-Rise/Mid-Rise – Non-Residential
(Commercial, Schools, Industrial)

HANS ROSLING CENTER



Low-Rise/Mid-Rise – Residential

SUNSET COURT



Low-Rise/Mid-Rise – Residential

STADIUM APARTMENTS



Sustainable / Resilience (Pervious, LEED)

SEATTLE STORM CENTER FOR BASKETBALL



Sustainable / Resilience (Pervious, LEED)

UNITY CARE NW N. WHATCOM HEALTH CENTER



Tilt-Up

PORTSIDE PHASE 3



Tilt-Up

HOGUM BAY LOGISTICS CENTER



Architectural / Artistic – Non-Residential
(Public Works, Commercial)

SEATTLE AQUARIUM OCEAN PAVILION

photo credit: Lara Swimmer Esto



Architectural / Artistic – Non-Residential
(Public Works, Commercial)

BACON & EGGS SKATEABLE ART SCULPTURE



Architectural / Artistic – Residential
(Driveways, Patios, Interior/Exterior Features)

HUNTS POINT 2



Architectural / Artistic – Residential
(Driveways, Patios, Interior/Exterior Features)

PAUL AND TAMMY MOBLEY



High-Rise 16+ Stories

AVENUE BELLEVUE



High-Rise 16+ Stories

SPIRE CONDOMINIUMS



Excellence in Concrete

The Excellence in Concrete Construction Awards Program is a prestigious event that recognizes the contributions of Owners, Architects, Engineers, Contractors, and Ready-Mix Suppliers in the field of concrete construction throughout Washington State.

An independent panel of judges evaluated over 30 unique projects across nine categories, selecting only two finalists for each category. We extend our heartfelt gratitude to our exceptional panel of judges for their invaluable expertise and insights. Your commitment and knowledge are truly commendable.

We also want to express our sincere appreciation to everyone who submitted a project for consideration. Your excellence in concrete construction deserves recognition. Keep up the great work!

This evening is dedicated to honoring all participants and their project teams for their remarkable achievements in concrete construction within the state of Washington. Thank you for your important contributions to this year's program.



**WASHINGTON AGGREGATES
& CONCRETE ASSOCIATION**

Legacy Sponsor

NCC

NORTHWEST CEMENT COUNCIL

High-Rise Sponsor



**Heidelberg
Materials**



A CRH COMPANY

Infrastructure Sponsor



SPECIALTY
PRODUCTS
GROUP®

Excellence in Concrete

Special thanks to Norb Caoili and Mike Lorrain from **Quantum Productions** for their excellent work over the years in creating our Excellence in Concrete awards presentations.



**WASHINGTON AGGREGATES
& CONCRETE ASSOCIATION**